

Cold war in Cuba

FORMER New Zealand and British champion Bob Wade has just returned to London from a month-long master tournament in Cuba. The winners were three Cubans, IM (international master) E. Cobo, IM J. Boudy and a young player, L. Bueno, whom I met last year at the world junior championships in Yugoslavia. Wade finished 11th equal.

One of Wade's wins in Cuba was as White against IM Oscar Quinones, the Peruvian number two. Black failed in one of the basic aims of the Gruenfeld; to smash the white centre to bits! Instead he chose a flank attack with 15... a5? and was unable to defend his king-side from a crushing attack.

Capablanca Memorial Cuba 1976

GRUENFELD DEFENCE

R. G. Wade O. Quinones

- 1. d4 Nf6
- 2. c4 g6
- 3. Nc3 d5
- 4. Nf3 Bg7
- 5. Qb3 dxc4
- 6. Qxc4 O-O
- 7. e4 N(f)d7

Smyslov's system which he developed in the late 1940s.

- 8. Be3 Nb6
- 9. Qb3 Nc6
- 10. Rd1 Bg4
- 11. d5 Ne5
- 12. Be2 Nxf3 ch
- 13. gxf3 Bh3?!

(13... Bh5 is best.)

- 14. Rg1 Bd7?

A dubious alternative to the best line 14... Qc8 15, f4 Bd7! 16, h4 e6. 17, h5 Re8! 18, hxg6 hxg6. 19, Bd4 Bxd4. 20, Rxd4 with an unclear position.

- 15. h4 a5?

"A flank attack must be countered by play in the centre" is the saying, and in this instance it proves true. White's attack must now come first.

- 16. h5 a4
- 17. Qb4 a3
- 18. b3 Nc8!?
- 19. Bd4 Nd6
- 20. f4!

Wade uses precise, direct methods to force home the win.

- 20... Bxd4
- 21. Qxd4 c5!?
- 22. dxc6 e.p.!

Why give the opponent slight counterplay (22, Qxc5 Rc8) when you are winning easily anyway?

- 22... Bxc6
- 23. f5 Qa5
- 24. hxg6 hxg6
- 25. b4!

After 25, fxg6 f6 holds for black.

- 25... Qc7

25... Qa7 runs into the crushing 26, b5! Qxd4. 27, Rxd4 Be8. 28, f6 Nc8. 29, e5! and mate by doubling rooks on the h-file cannot be prevented.

- 26. b5 Bxe4

Desperation. But who could face 26, ... Be8. 27, Nd5 Qd8. 28, f6?

- 27. Nxe4 Nxf5
- 28. Qc4 Qa5 ch
- 29. Kf1 Kg7

Not 29... Rac8. 30, Qd5! (30, Rxc6ch Kh7!) e6. 31, Qe5.

- 30. Ng3 Nxc3 ch
- 31. Rxc3 e5?
- 32. Rd7

Wade has seen a way to win, but misses the prettier

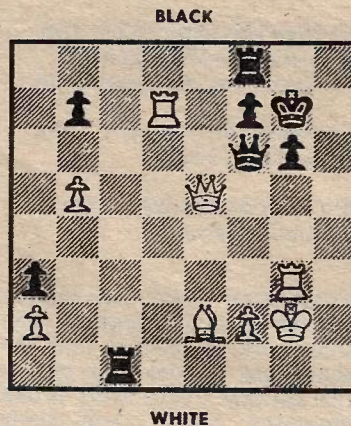
32, Rxc6 ch! which mates. (32, Rxc6ch fxg6. 33, Rd7 ch Kf6. 34, Qh4ch g5. 35, Qh6ch Kf5. 36, Bd3ch Kg4. 37, Qe6ch Kf4 and 38, Qc4ch etc. 32, Rxc6ch Kxc6. 33, Qg4 ch Kf6. 34, Rd6 ch Ke7. 35, Qd7 checkmate. Or: 32, Rxc6ch Kxc6. 33, Qg4ch Kh7. 34, Qh5 ch Kg7. 35, Qg5 ch Kh7. 36, Rd3 and Rh3 checkmate.)

- 32... R(a)c8
- 33. Qe4

33, Rxc6 ch! mates as before.

- 33... Rc1 ch
- 34. Kg2 Qb6
- 35. Qxe5 ch Qf6

The position Wade has been aiming for.



- 36. Rxc6 ch! Kxc6
- 37. Rd6 Qxd6
- 38. Qxd6 ch f6?

Perhaps a time-trouble error, but Black's position is resignable anyway. After 38, ... Kg7 he will lose his rook on c1 to a series of queen checks, beginning with 39, Qg3 ch.

- 39. Qxf8 Resigns.

A neat example of how to punish an incorrect plan.

MURRAY CHANDLER